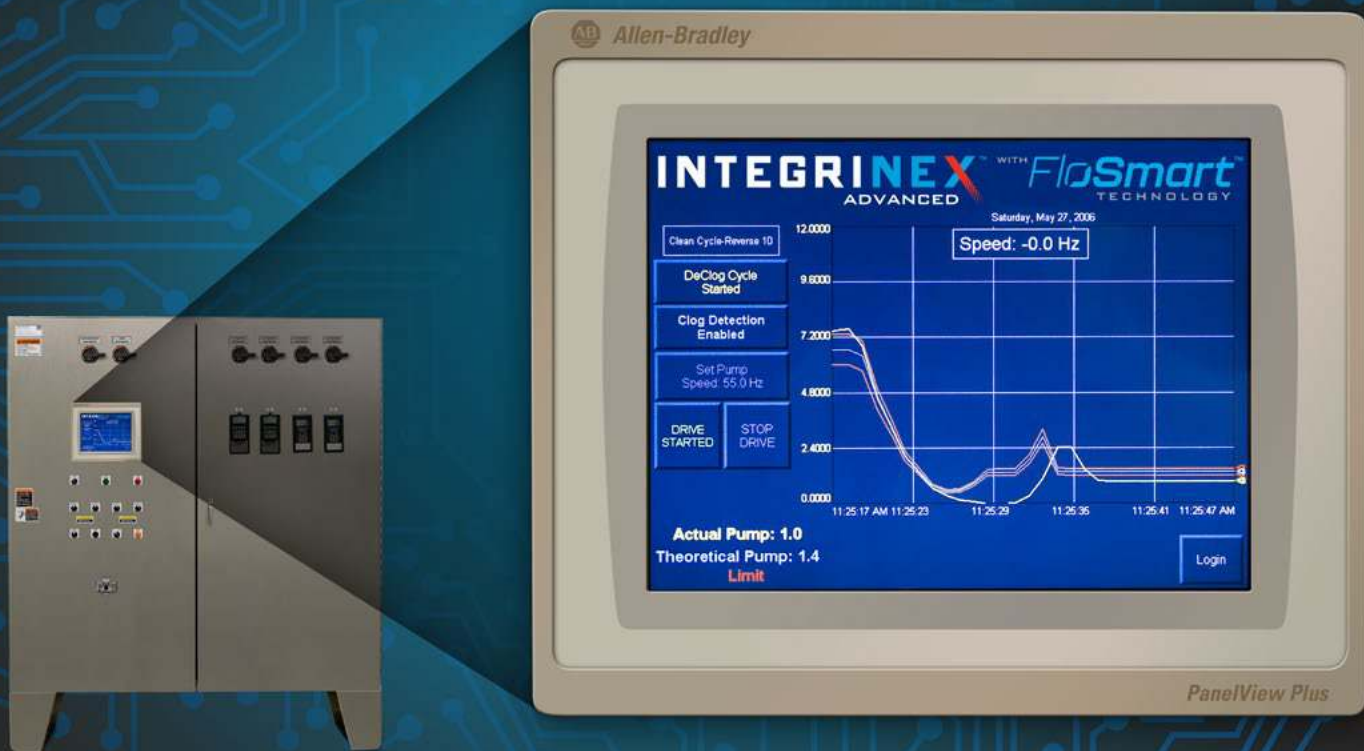


# Integrinex™ Advanced Control Systems

WITH **FloSmart™**  
TECHNOLOGY



Gorman-Rupp's Integrinex™ Advanced lift station controls are custom engineered to meet your unique system requirements. Now, when equipped with new FloSmart™ technology, the Integrinex Advanced control system can detect a pump obstruction and run a cleaning cycle until the debris clears.

A simple, effective solution for dealing with today's "new sewage," Integrinex Advanced controls with FloSmart technology featuring integrated architecture that recognizes when a pump is clogging. Upon detection,

the device initiates a cleaning operation without interfering with the operation of the pump station. When the cycle is complete, the pump is ready to return to normal operation. If normal operation is not achieved, the cleaning sequence repeats until the blockage is cleared.



Integrinex Advanced with FlowSmart technology is available in new ReliaSource® lift stations.

And, when combined with the Eradicator® Solids Management System, FloSmart helps maximize uptime while reducing maintenance costs.

**ERADICATOR**  
Solids Management System



**GORMAN-RUPP PUMPS**

P.O. BOX 1217

MANSFIELD, OHIO 44901-1217 | USA

TEL: 419.755.1011 | FAX: 419.755.1251

**GRPUMPS.COM**

**GR**  
**GORMAN-RUPP**  
**PUMPS**

*The Pump People®*