



O SERIES®

*High Efficiency Self-Priming
Centrifugal Pumps*



The Pump People®



O SERIES®

High Efficiency Self-Priming Centrifugal Pumps

Gorman-Rupp O Series® self-priming centrifugal pumps have a straight-in suction design which eliminates entrance restrictions and provides better performance when handling a variety of clear liquids.

Gorman-Rupp O Series pumps feature a balanced, enclosed multi-vane impeller that provides peak performance while handling a

variety of products. Whether it's dewatering at a construction site, off-loading petroleum at a bulk plant or supplying water for drip irrigation at a farm, O Series pumps excel in moving fluids that do not contain large solids.

And, because they have few moving parts, O Series pumps are easy to maintain and service, saving money in the long run.

High-Efficiency Impeller

O Series® pumps are fitted with copper alloy or aluminum high-efficiency closed impellers as standard equipment. Other materials are also available for unique applications. Consult factory for details.



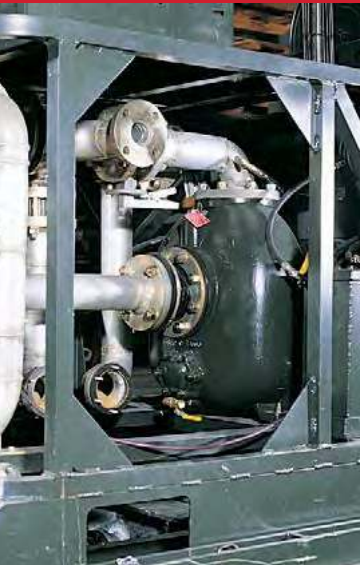
Long-Life Seals

O Series pumps are available with self-lubricated mechanical shaft seals for dependability and long service life. Fluorocarbon elastomers are standard. Optional seal materials are available to handle a variety of fluids. Consult factory for details.



Adaptability

O Series pumps are available pedestal mounted for flexible coupling to a power source. The sturdy pedestal has a heavy-duty shaft and sealed end ball bearings. In addition, some models are available close-coupled to electric motors or as Power Take-Off.



GORMAN-RUPP O SERIES®

The Right Pump For The Job

- 01 | Suction Inlet
- 02 | Discharge Outlet
- 03 | Volute
- 04 | High Efficiency Closed Impeller
- 05 | Mechanical Seal
- 06 | Fill Port
- 07 | Sealed End Ball Bearings
- 08 | Heavy-Duty Pedestal



OTS noted models are included in the Gorman-Rupp OTS pump program. These products are available anytime, anywhere.

Drive Variations



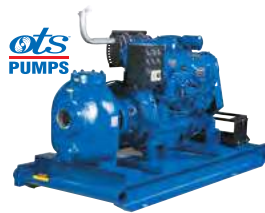
O Series®
Basic pump

Size: 2" (50 mm) to 6" (150 mm)
Max Capacity: 1350 GPM (85.2 lps)
Max Head: 400' (121.9 m)
Max Solids: 0.6" (15.2 mm)
Materials of Construction:
Copper Alloy, Aluminum or
Steel Impeller, Ductile Iron or
Cast Steel Housing



O Series®
Close-coupled
Shown with explosion-proof motor

Size: 2" (50 mm)
Max Capacity: 140 GPM (8.8 lps)
Max Head: 90' (27.4 m)
Materials of Construction:
Copper Alloy, Aluminum or
Cast Steel Housing



O Series®
Engine driven
Size: 4" (100 mm)
Power: Deutz - Diesel
Max Capacity: 730 GPM (46.1 lps)
Max Head: 280' (85.3 m)
Materials of Construction:
Copper Alloy, Aluminum or
Steel Impeller, Ductile Iron or
Cast Steel Housing



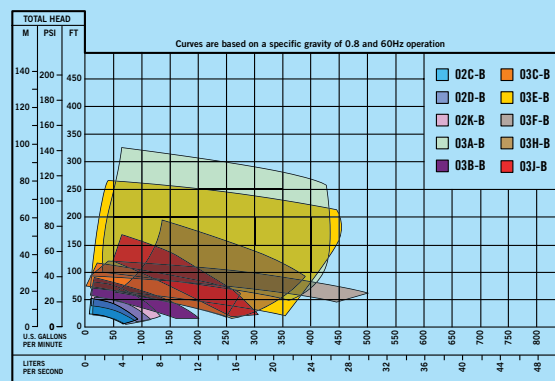
O Series®
Engine driven utility
Size: 3" (75 mm)
Power: Honda - Gasoline
Max Capacity: 400 GPM (25.2 lps)
Max Head: 160' (48.8 m)
Materials of Construction:
Copper Alloy, Aluminum or
Steel Impeller, Ductile Iron or
Cast Steel Housing



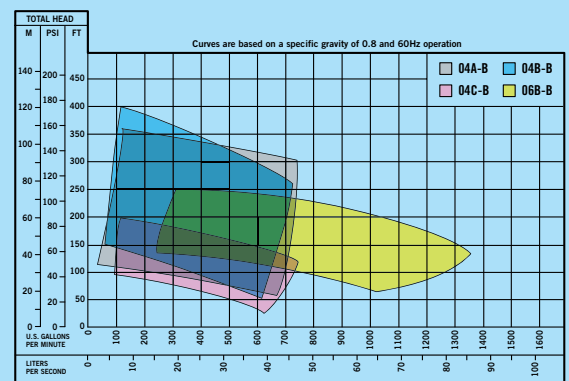
O Series®
Power take-off or hydraulic
motor driven
Size: 2" (50 mm) to 3" (75 mm)
Max Capacity: 400 GPM (25.2 lps)
Max Head: 440' (134.1 m)
Seal Elastomer: Viton®
Materials of Construction:
Copper Alloy, Aluminum or
Steel Impeller, Ductile Iron or
Cast Steel Housing

Pump Performance Data

2" to 3" Models



4" to 6" Models



Viton® is a registered trademark of DuPont Performance Elastomers. All rights reserved.

FLUID-HANDLING EQUIPMENT DESIGNED WITH YOUR NEEDS IN MIND



★ **Manufacturing Facilities**
● **Distribution Centers**

Gorman-Rupp USA
Mansfield, Ohio, USA
Gorman-Rupp Canada
St. Thomas, Ontario, Canada

Gorman-Rupp Europe
Culemborg, Netherlands
Namur, Belgium
Gorman-Rupp Africa
Cape Town, South Africa
Durban, South Africa
Johannesburg, South Africa (Headquarters)

Distribution Centers
Dubai, United Arab Emirates
Grand Prairie, Texas, USA
Culemborg, Netherlands

Engineering and manufacturing superiority has been the hallmark of Gorman-Rupp since our inception in 1933. Today we bring our products to life in some of the most efficient, modern and state-of-the-art manufacturing facilities in the world. Gorman-Rupp has a selection of nearly 3,000 pump models, and our world-class team of distributors has worked closely with thousands of end users around the world. We have the proven expertise and the resources to specify, manufacture, test and service your pump, and to ensure reliable performance for the long haul.



GORMAN-RUPP PUMPS

P.O. BOX 1217
MANSFIELD, OHIO 44901-1217 | USA
TEL: 419.755.1011 | FAX: 419.755.1251

GRPUMPS.COM



The Pump People®