

SECTION 3.4 INTEGRINEX STANDARD MENU TREE

DESCRIPTION

The Integrinex STANDARD Interface provides a means for the pump station operator to monitor process and equipment status as well as make adjustments to the control system. The Integrinex interface is normally used for automatic operation. The Integrinex STANDARD Menu Tree (Table 1) indicates the operation and display functions, which have been programmed by Gorman-Rupp. Use the menu tree as a quick reference index to available screens.

OPERATION

Up / Down Arrow Keys: Some screens require object selection from a list. Use these keys to position the cursor next to the object you desire, then press the Enter key to make the selection.

Left / Right Arrow Keys: Some screens require data to be entered from the interface. In such cases, use these keys to move the cursor next to the data entry field you desire, then use the Up / Down Arrow Keys to change the numeric value to be entered.

Enter Key: Use the Enter key to enter into the menu and store a value.

ESC Key: Use the ESC key to move out of a menu.

ADJUSTMENTS

CAUTION

Adjustments are best made when the pumps are off. If wet well level must be maintained, operate the pumps manually during adjustment procedures. Adjustments made during automatic mode may cause unexpected operation.

Set points

1. Press the [ENT▶] button on the front of the Integrinex Standard controller to access the Main

Menu screen. Use the up and down arrow keys (▲,▼) to access the SETUP. Press the [ENT▶] button on the front of the Integrinex Standard controller to select SETUP. Enter the Access Code, refer to the Integrinex Setup section 12.1.

2. Use the up and down arrow keys (▲,▼) to access the LEVEL SETPOINTS. Press the [ENT▶] button on the front of the Integrinex Standard controller to select LEVEL SETPOINTS. Use the up and down arrow keys (▲,▼) to select desired ON and OFF set points.

3. Use the up and down Arrow keys (▲,▼) to adjust the set point levels. Press the [ENT▶] button to save set points.

4. Repeat steps 2, and 3 to set all other set point ON and OFF levels.

Refer to Table 1, Integrinex STANDARD Menu Tree for available screens. Refer to Section 12 for specific instructions using the Integrinex STANDARD Unit.

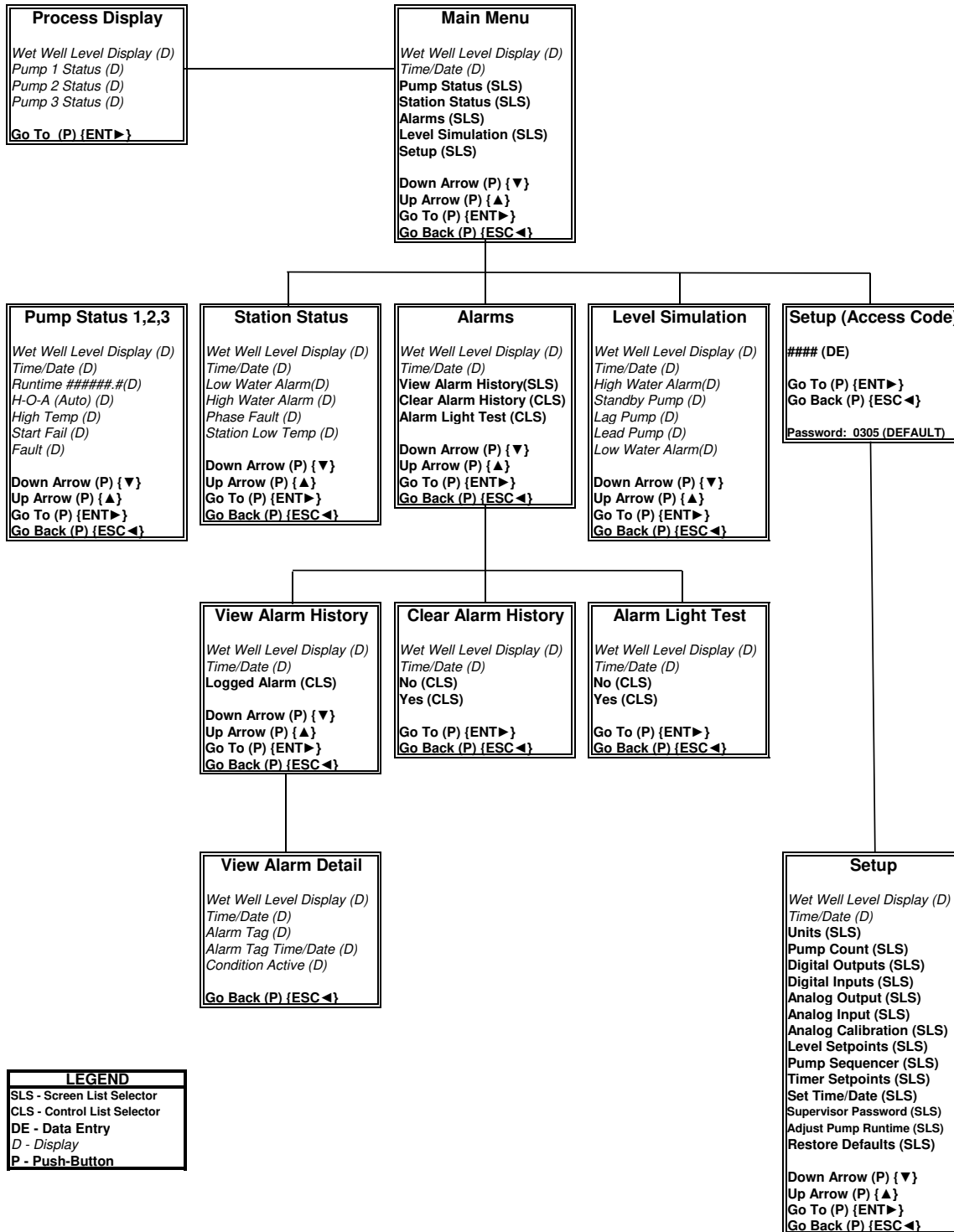
TROUBLESHOOTING

1. If the Integrinex STANDARD interface fails to function, make certain the control circuits are energized, that the appropriate switches and circuit breakers are closed and that all fuses are good. Power must be on at the Pressure/Logic control panel.

2. Control assembly troubleshooting is provided in Pump Station section 11.1 or refer to the Integrinex STANDARD manuals in section 12.1 for more detailed troubleshooting of this device.

SCHEDULED MAINTENANCE

The components of the Integrinex STANDARD interface are solid state requiring no scheduled maintenance. Replace a defective unit as required. Please contact your Gorman-Rupp representative for replacement.



LEGEND
SLS - Screen List Selector
CLS - Control List Selector
DE - Data Entry
D - Display
P - Push-Button

Note: Menu tree lists all possible options, some options may not be in your specific configuration.

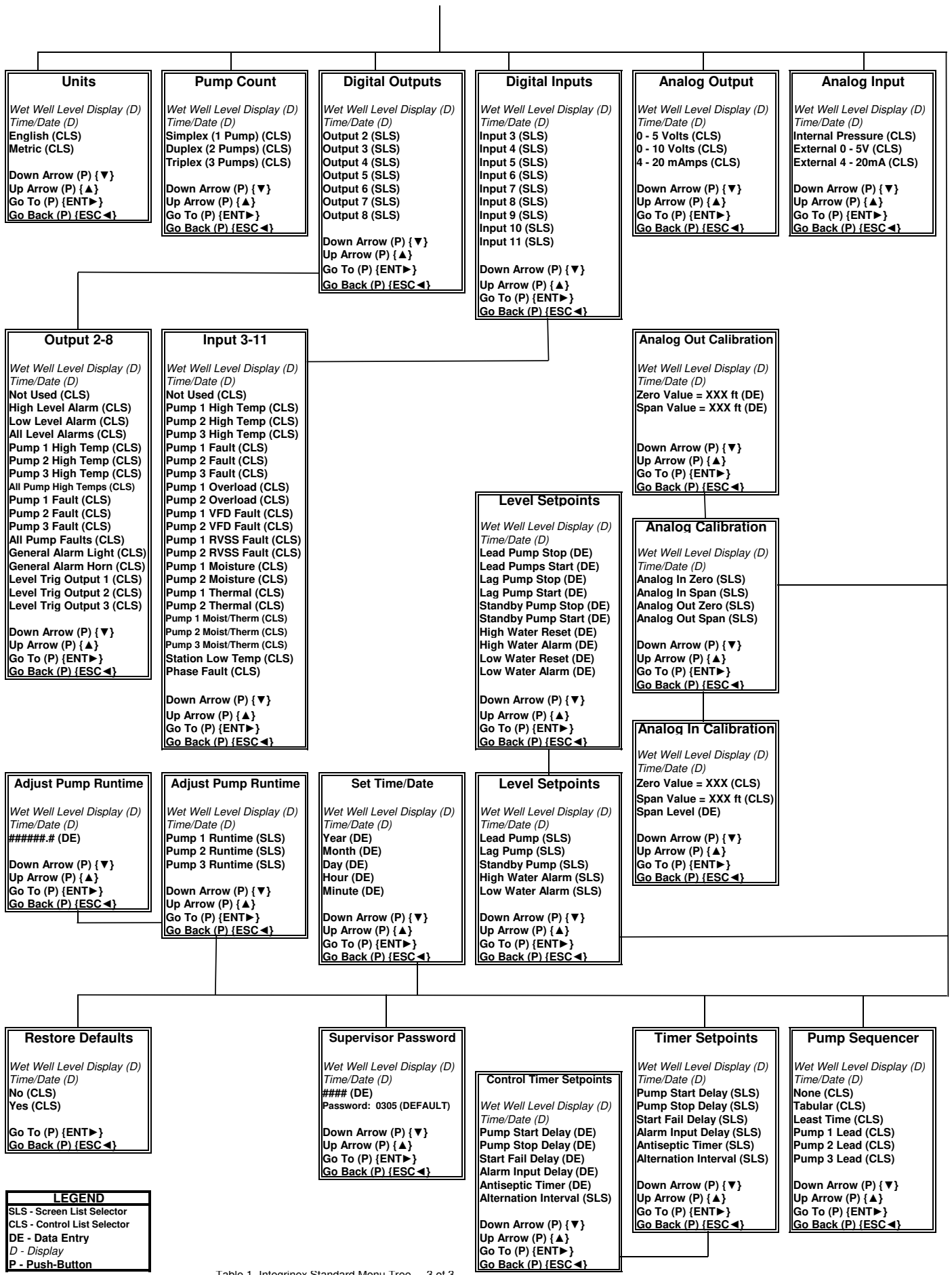


Table 1. Integrinex Standard Menu Tree 3 of 3